

HARDWARE CATALOG
E-CATALOG



WEATHER SHIELD.
WINDOWS & DOORS

WELCOME



WINDOWS SHOWN:

Configuration: Awning Windows

Exterior Color: Black Poly

Hardware Finish: Black

Product Line: Contemporary Collection



When Edward Lee Schield designed his first window in 1955, he set into motion a company built around an inventive spirit. His enthusiasm for innovation defines Weather Shield to this day. After more than 60 years and 33 patents, Weather Shield remains faithfully focused on creating something better and purposeful.

Our quest to bring you the latest and greatest products is firmly grounded in serving the needs of our customers. We're still a family-owned business that believes in listening closely to the people who specify, buy and install our windows and doors. Their input is critical as we strive to improve and perfect every aspect of product design and performance.

All of our products benefit from the highest quality hardware available. It's our way of honoring our founder's vision of combining old-world craftsmanship with innovative design and materials — a philosophy we embrace down to every last detail. Our hardware collection

features beautiful, elegant pieces that complement the look of any door or window, while also offering crucial features to enhance safety, energy efficiency, and design.



TABLE OF CONTENTS

Why Weather Shield?	4	Hinged Patio Door Hardware		EMTEK® Collection.....	13
Window Hardware	6	Ashley Norton Collection.....	10	HOPPE® Collection	14
Sliding Patio Door Hardware.....	8	Baldwin® Collection	12	Architectural Services	15

WHY WEATHER SHIELD?



WINDOWS & DOORS SHOWN:

Configuration: French Push-Out Casement

Interior Finish: Black Poly

Hardware Finish: Black

Product Line: Contemporary Collection



5 REASONS TO CONSIDER WEATHER SHIELD

With hundreds of window and door manufacturers to choose from, it can be difficult to distinguish one company from another. We thought it might be helpful to share a few of the things that set Weather Shield apart from the rest.

1 Continuous Innovation

At Weather Shield, we never stop searching for ways to improve both our products and our processes. The goal of discovering new and innovative solutions has always been part of our DNA. That's why we have our own dedicated Research and Development Center and the largest onsite test lab in the industry. Not a day goes by when we aren't working on building a better product.

2 Best-In-Class Warranty

At Weather Shield, we do more than talk about our dedication to craftsmanship and quality materials. We back our products with a warranty against defects in material or workmanship for a period of 20 years, and against wood rot on all clad products for 30 years*. So you can be confident you're getting an outstanding product from a trustworthy company.

3 Design Flexibility

When you design with Weather Shield, you have options. Our casements alone allow you to create more than 6,000,000 different configurations.

Choose from an impressive array of wood interiors and finishes, along with a myriad of exterior colors. We also offer some of the industry's largest expanses of glass for framing spectacular views. Whatever the style, whatever the size, nobody gives you more choices than Weather Shield.

4 Energy Efficiency Without Sacrifice

Through our innovative use of materials and design, we're able to offer industrial strength efficiency with refined appearance. We're very deliberate in our use of energy efficient materials to drive performance where it matters most. We're proud to offer an extensive number of beautifully designed ENERGY STAR® rated products.

5 Family Owned and Operated

For more than 60 years, Weather Shield has remained a family-owned and operated company. That allows us the freedom to take a long-term perspective and keep our focus on serving customer needs rather than a singular focus of achieving quarterly financial targets.

As we've grown to become a respected national brand, we've seen technology and materials evolve. But our core values have never changed. Today, we remain dedicated to building long-term relationships and crafting innovative products that meet the needs of our customers.

*For more specific information regarding our warranty, visit weathershield.com/warranties.



WINDOW HARDWARE

ELEVATE YOUR WINDOWS WITH STUNNING HARDWARE

Whether your home has the classic appeal of double hung windows, or you're maximizing fresh air with a casement or awning design, we have the perfect hardware solution. Choose from a variety of finishes and everything from contemporary to historical designs to create exactly the right look and feel for your specialty windows.

Double Hung Hardware

PREMIUM SERIES



HISTORICAL SASH LOCK

- Available Finishes:**
- White
 - Tan
 - Brushed Nickel
 - Bright Brass
 - Rustic Bronze
 - Black



HISTORICAL FINGER LIFT

- Available Finishes:**
- White
 - Tan
 - Brushed Nickel
 - Bright Brass
 - Rustic Bronze
 - Black

PREMIUM SERIES, SIGNATURE SERIES



CONTEMPORARY SASH LOCK

- Available Finishes:**
- White
 - Tan
 - Brushed Nickel
 - Bright Brass
 - Rustic Bronze
 - Black



CONTEMPORARY LIFT HANDLE

- Available Finishes:**
- White
 - Tan
 - Brushed Nickel
 - Bright Brass
 - Rustic Bronze
 - Black

SIGNATURE SERIES

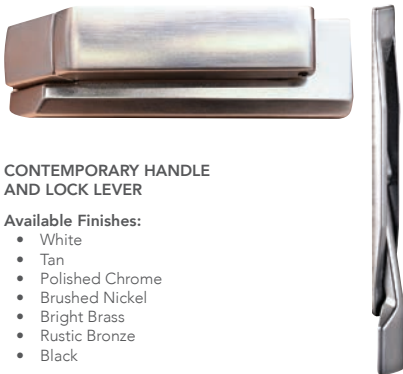


SASH LOCK

- Available Finishes:**
- White
 - Tan
 - Brushed Nickel
 - Bright Brass
 - Rustic Bronze
 - Black

Casement & Awning Hardware

CONTEMPORARY COLLECTION, PREMIUM SERIES, PREMIUM COASTAL SERIES



CONTEMPORARY HANDLE AND LOCK LEVER

- Available Finishes:**
- White
 - Tan
 - Polished Chrome
 - Brushed Nickel
 - Bright Brass
 - Rustic Bronze
 - Black

CONTEMPORARY COLLECTION, PREMIUM SERIES, PREMIUM COASTAL SERIES, SIGNATURE SERIES



NESTED FOLDING CRANK AND SEQUENTIAL LOCK LEVER

- Available Finishes:**
- White
 - Tan
 - Polished Chrome
 - Brushed Nickel
 - Bright Brass
 - Rustic Bronze
 - Black

CONTEMPORARY COLLECTION, PREMIUM SERIES

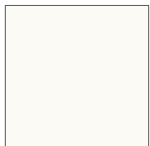


PUSH-OUT HARDWARE

- Available Finishes:**
- White
 - Tan
 - Polished Chrome
 - Brushed Nickel
 - Bright Brass
 - Rustic Bronze
 - Black

Finish First*

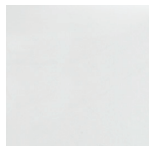
Window hardware finishes are available in an array of colors and textures to suit any user's tastes. Options range from ultra modern brushed nickel to sleek black, allowing you to achieve any desired look.



WHITE



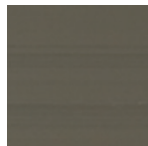
TAN



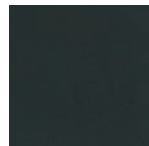
POLISHED CHROME



BRUSHED NICKEL



RUSTIC BRONZE



BLACK

*All finishes not available on all hardware.

Finishes and colors shown may not be actual representations. Please visit an authorized Weather Shield dealer for color samples.

SLIDING PATIO DOOR HARDWARE



LEADING EDGE HARDWARE TO PERFECT YOUR SLIDING DOORS

Explore our range of hardware ideally suited to Weather Shield's sliding doors. It's all here — from sleek, European-style contemporary options to timeless traditional pieces that complete any design. Finishes are available in a wide variety of textures and looks, including both modern and classic options as well.

CONTEMPORARY COLLECTION
SLIDING PATIO



DALLAS HANDLE

Available Finishes:

- Rustic Bronze
- Alpine Frost²
- Matte Black³

CONTEMPORARY COLLECTION
NEXT GEN SLIDING PATIO DOOR



ATLANTA HANDLE



DALLAS HANDLE



AMSTERDAM HANDLE



EXTERIOR HANDLE

Available Finishes:

- Satin Nickel
- Rustic Bronze
- Matte Black³

CONTEMPORARY COLLECTION, PREMIUM SERIES
MULTI-SLIDE DOOR



FLUSH INTERIOR HANDLE



FLUSH EXTERIOR HANDLE

Available Finishes:

- Satin Nickel
- Rustic Bronze
- Matte Black

CONTEMPORARY COLLECTION,
PREMIUM SERIES,
PREMIUM COASTAL SERIES,
SIGNATURE SERIES



SLIDING PATIO DOOR
TWO-POINT LOCKING SYSTEM

Available Finishes:

- White
- Bright Brass PVD
- Brushed Nickel PVD
- Chrome
- Antique Brass
- Oil-Rubbed Bronze
- Black

PREMIUM SERIES,
PREMIUM COASTAL SERIES



FRENCH SLIDING PATIO DOOR
THREE-POINT LOCKING SYSTEM

Square Back Plate (shown), Arched Back Plate

Available Finishes:

- Bright Brass PVD
- Brushed Nickel PVD
- Chrome
- Antique Brass
- Oil-Rubbed Bronze
- Black

CONTEMPORARY COLLECTION,
PREMIUM SERIES,
PREMIUM COASTAL SERIES



SLIDING PATIO DOOR
THREE-POINT LOCKING SYSTEM

Square Back Plate, Arched Back Plate (shown)

Available Finishes:

- Bright Brass PVD
- Brushed Nickel PVD
- Chrome
- Antique Brass
- Oil-Rubbed Bronze
- Black

The Perfect Finishing Touch

Discover the full range of **door hardware finishes** – from classic to contemporary – and experience the power of design to shape your perspective.



WHITE



BRIGHT BRASS
PVD



BRUSHED
NICKEL PVD



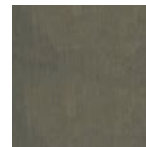
CHROME



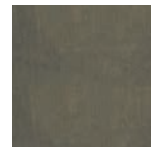
SATIN NICKEL
PVD



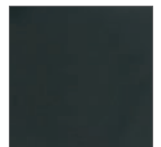
ANTIQUE BRASS



OIL-RUBBED
BRONZE



RUSTIC
BRONZE



BLACK

¹ Oil-Rubbed Brass is comparable to Oil-Rubbed Bronze.

² Alpine Frost is comparable to Satin Nickel PVD.

³ Matte Black is comparable to Black.

Finishes and colors shown may not be actual representations. Please visit an authorized Weather Shield dealer for color samples.

HINGED PATIO DOOR HARDWARE

ASHLEY NORTON COLLECTION

Ashley Norton is a leader in high-end architectural hardware, with a collection of designs, finishes and styles to suit the tastes of the most discerning customers.

Brass Base Material

CONTEMPORARY COLLECTION



APOLLO HANDLE
LIST PRICE \$227



CHALLENGER HANDLE
LIST PRICE \$253



ATLAS HANDLE
LIST PRICE \$227



BAUHAUS HANDLE
LIST PRICE \$227

PREMIUM SERIES, PREMIUM COASTAL SERIES



CHESTER HANDLE
LIST PRICE \$270



COLONIAL HANDLE
LIST PRICE \$270



CHURCHILL HANDLE
LIST PRICE \$270

Brass Base Finish Options



SATIN BRASS



POLISHED BRASS



POLISHED CHROME



SATIN NICKEL



SATIN CHROME



POLISHED NICKEL



DARK OIL RUBBED**

Living Finish*

* A Living Finish is a non-lacquered, unprotected finish that "changes" over time giving your hardware a unique and one of a kind look.

** Suggested finishes for coastal applications. Lacquered finishes are not suitable for coastal applications.

Finishes and colors shown may not be actual representations. Please visit an authorized Weather Shield dealer for color samples.

*** List pricing based on keyed handle set option.

HINGED PATIO DOOR HARDWARE

Bronze Base Material

CONTEMPORARY COLLECTION



MERIDIAN HANDLE
LIST PRICE \$304



APOLLO HANDLE
LIST PRICE \$321



ATLAS HANDLE
LIST PRICE \$273



BAUHAUS HANDLE
LIST PRICE \$304

PREMIUM SERIES, PREMIUM COASTAL SERIES



CHESTER HANDLE
LIST PRICE \$290



COLONIAL HANDLE
LIST PRICE \$290



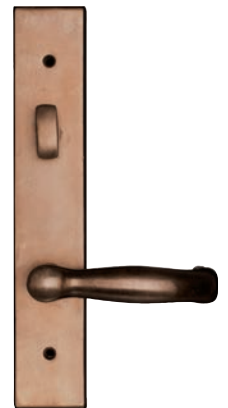
CENTAUR HANDLE
LIST PRICE \$290



APOLLO HANDLE
LIST PRICE \$304



ARTEMIS HANDLE
LIST PRICE \$321

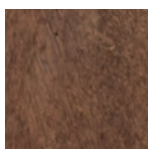


HAMPTON HANDLE
LIST PRICE \$321

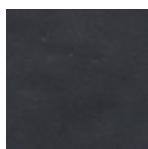
Bronze Base Finish Options



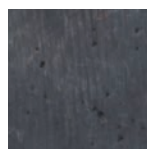
WHITE BRONZE**



LIGHT BRONZE**



DARK BRONZE**



MATTE BLACK**

Living Finish*

* A Living Finish is a non-lacquered, unprotected finish that "changes" over time giving your hardware a unique and one of a kind look.

** Suggested finishes for coastal applications. Lacquered finishes are not suitable for coastal applications.

Finishes and colors shown may not be actual representations. Please visit an authorized Weather Shield dealer for color samples.

HINGED PATIO DOOR HARDWARE

BALDWIN® COLLECTION

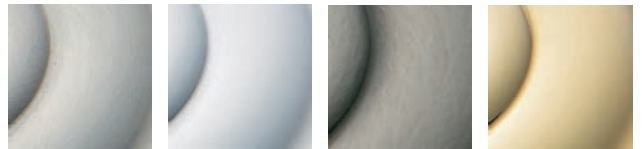
Baldwin hardware is lauded for its quality and revered for the security of its locks and latches. Explore a range of luxurious styles and rich finishes that complement Baldwin's superior manufacturing.

CONTEMPORARY COLLECTION



SANTA MONICA HANDLE
LIST PRICE \$616

Finish Options



SATIN NICKEL SATIN CHROME ANTIQUE NICKEL* LIFETIME POLISHED BRASS



VINTAGE BRASS SATIN BRASS AND BLACK VENETIAN BRONZE* SATIN BLACK

*Hand-relieved finish variances. Product finishes which are hand relieved may vary in luster, hue and appearance as a result of handcrafted variances in the final finishing step.

Finishes and colors shown may not be actual representations. Please visit authorized Weather Shield dealer for color samples.

PREMIUM SERIES, PREMIUM COASTAL SERIES



BRISTOL HANDLE
LIST PRICE \$722



SPRINGFIELD HANDLE
LIST PRICE \$752



BOULDER HANDLE
LIST PRICE \$663



KENSINGTON HANDLE
LIST PRICE \$722

** List pricing based on keyed handle set option.

HINGED PATIO DOOR HARDWARE

EMTEK® COLLECTION

Express your personal style with the EMTEK Collection. All options are customizable and represent the best in craftsmanship and design – perfect for making just the right statement in your home.

PREMIUM SERIES, PREMIUM COASTAL SERIES



TETON HANDLE
LIST PRICE \$207

- Available Finishes:**
- Flat Black Bronze Patina
 - Medium Bronze Patina



CODY HANDLE
LIST PRICE \$207

- Available Finishes:**
- Flat Black Bronze Patina
 - Medium Bronze Patina



NAPOLI HANDLE
LIST PRICE \$207

- Available Finishes:**
- Flat Black Bronze Patina
 - Medium Bronze Patina



SANTA FE HANDLE
LIST PRICE \$180

- Available Finishes:**
- Oil Rubbed Bronze
 - Satin Nickel
 - Flat Black
 - Polished Chrome
 - Unlacquered Brass



COVENTRY HANDLE
LIST PRICE \$180

- Available Finishes:**
- Oil Rubbed Bronze
 - Satin Nickel
 - Polished Chrome
 - Unlacquered Brass

Finish Options



FLAT BLACK BRONZE PATINA MEDIUM BRONZE PATINA OIL RUBBED BRONZE SATIN NICKEL FLAT BLACK POLISHED CHROME UNLACQUERED BRASS

Finishes and colors shown may not be actual representations. Please visit an authorized Weather Shield dealer for color samples.

HINGED PATIO DOOR HARDWARE

HOPPE® COLLECTION

The HOPPE Collection includes a number of contemporary and traditional styles that feature the best in security and durability. Experience high performance and sleek design with these diverse options.

PREMIUM SERIES, PREMIUM COASTAL SERIES



DALLAS HANDLE
LIST PRICE \$110

VERONA HANDLE
LIST PRICE \$110

MÜNCHEN HANDLE
LIST PRICE \$110

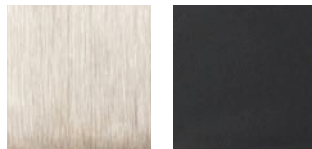


CONTEMPORARY COLLECTION



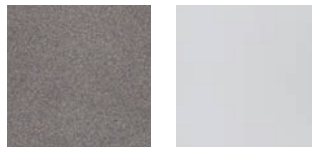
DALLAS HANDLE
LIST PRICE \$110

Finish Options



SATIN NICKEL

MATTE BLACK



RUSTIC BRONZE

CHROME*

* Chrome only available for Contemporary Collection.

** List pricing based on keyed handle set option.

Finishes and colors shown may not be actual representations. Please visit an authorized Weather Shield dealer for color samples.



WINDOWS SHOWN:

Configuration: Casement

Interior Finish: Pine with Prefinished White

Hardware Finish: White

Features: Insulated Low-E with Argon

HARDWARE CATALOG

WEATHER SHIELD®
WINDOWS & DOORS

800.222.2995
weathershield.com